

# Unit 1: Diagnostic Investigation in Art & Design

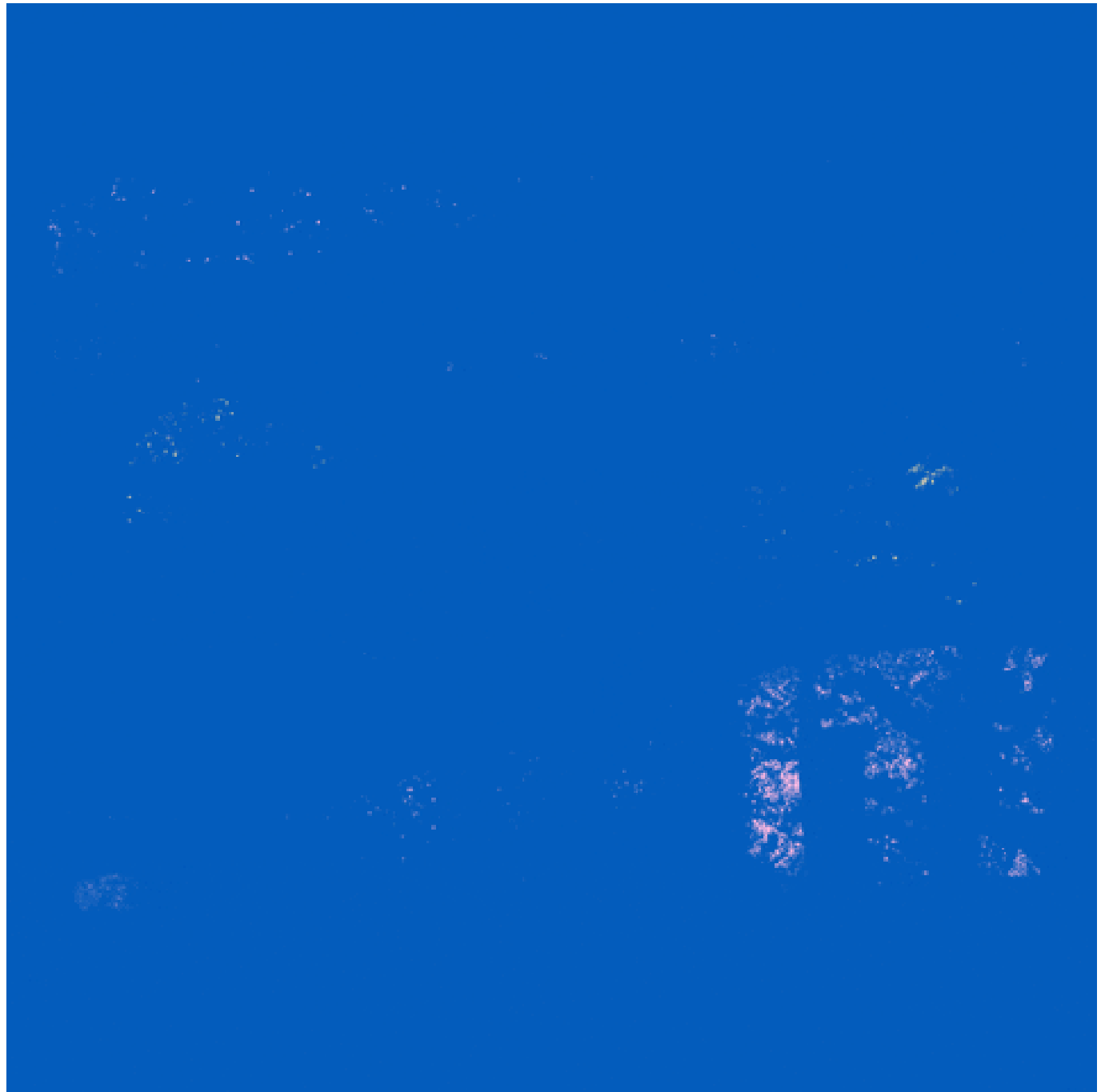
aka Final Major Project

# What's the Theme?

<https://www.youtube.com/watch?v=VcjzHMhBtf0>

JOURNEY

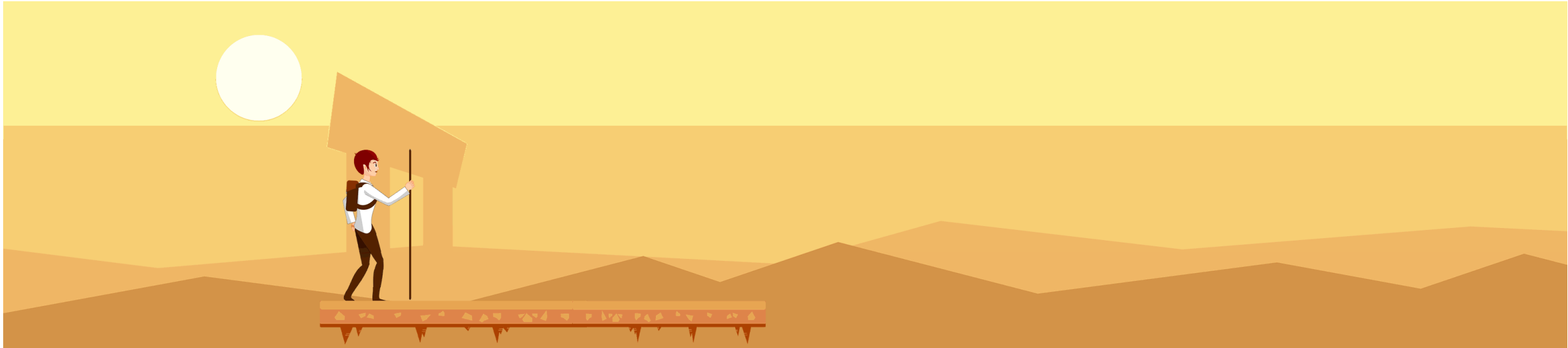
# What's Your Specialism



**ALWAYS  
PLAN AHEAD  
D**

Week	W/C	Tasks	Your Plan
1	7 Feb	1. INITIAL RESEARCH	
2	14 Feb	2. PROJECT PROPOSAL (3hrs) 3. RESEARCH & EXPERIMENTATION	
<b>Half-Term</b>			
3	28 Feb	3. RESEARCH & EXPERIMENTATION	
4	7 Mar	3. RESEARCH & EXPERIMENTATION	
5	14 Mar	3. RESEARCH & EXPERIMENTATION	
6	21 Mar	3. RESEARCH & EXPERIMENTATION	
7	28 Mar	3. RESEARCH & EXPERIMENTATION	
8	4 Apr	3. RESEARCH & EXPERIMENTATION	
<b>Easter Break</b>			
9	25 Apr	4. PRODUCTION	
10	2 May	4. PRODUCTION	
11	9 May	5. PORTFOLIO CREATION (10 hrs) 5. EVALUATION (2 hrs)	<b>Submission deadline: Friday 13<sup>th</sup> May before 3pm</b>

# Your Interpretation of JOURNEY



“Not all those who wander are lost.”  
— *J.R.R. Tolkien, The Fellowship of the Ring*





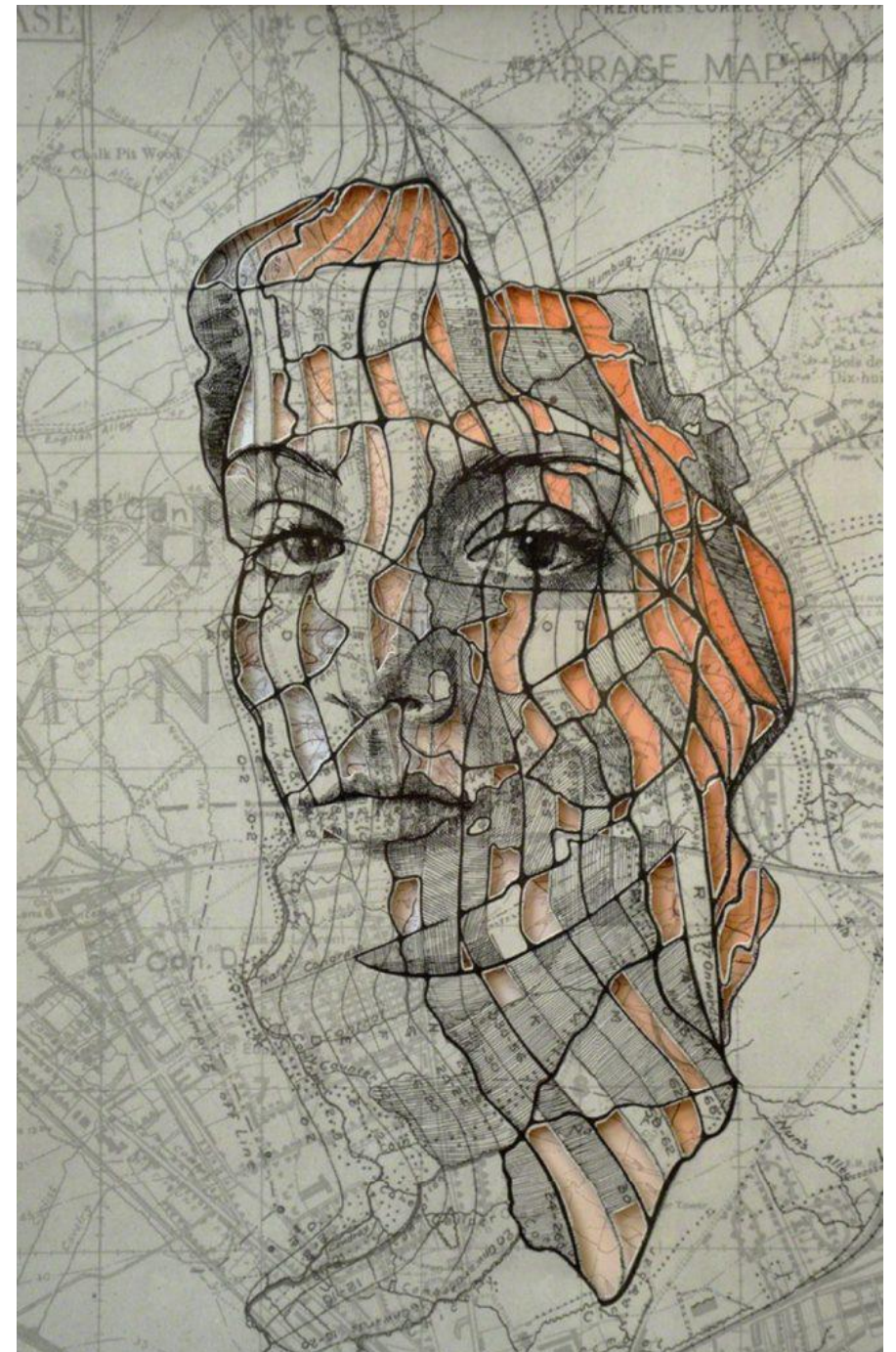
# Travel Posters

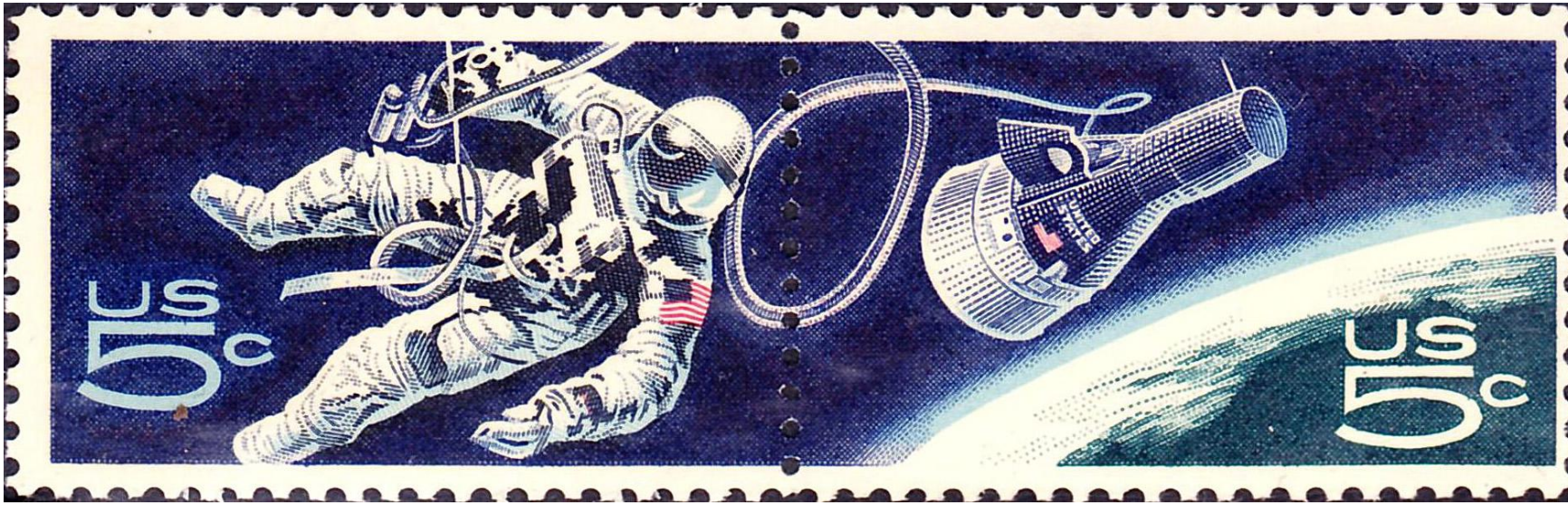


# Helen Zughaib – Syrian migration series



# Upcycling old maps





Postage Stamps

Tracks, roads,  
footpaths etc



# Expulsion From Number 8 Eden Close - tapestry by Grayson Perry



David Lynch - *Bob Sees Himself Walking Toward A Formidable Abstraction* – mixed media



# Anthony Gormley

