

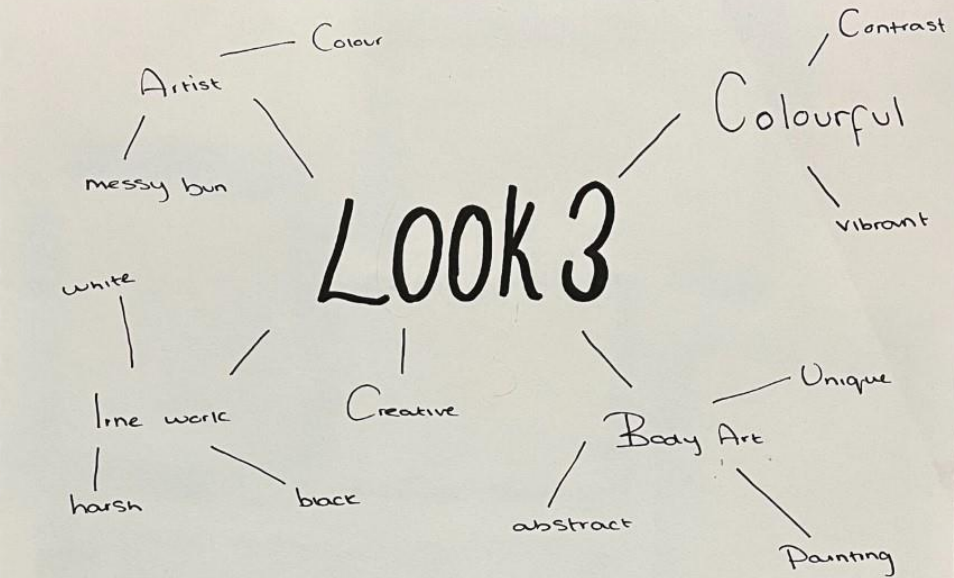
INSPIRATION

My inspiration for this look are the paintings created by Leonid Afremov. his work is super vibrant and very unique compared to other artists work. I love how the colours contrast but in a soft way from blue to yellow it blend through the whole rainbow for a subtle blend. The texture of the palette knife work also helps as the layering adds depth to create an abstract image, and to me i think its such a clever way of painting a landscape / portraits. Therefore, im going to try and involve his style of painting into my look or his inspiration.



PLAN

My initial plan for this look is to incorporate Afremov's work by using his colour palette and i think to do this best im going to do a white base and layer colour on top focusing on highlights and shadows with linework of black and white then have the colour below of warm tones (yellows reds) then the cooler tones to contrast yet again (purples blues). I think having the colours blended together with the harsh line work on top would be similar to Afremov since he uses palette knives to layer oils to create that look, similar to Afremov's paintings. I also just think it would look good as a mask since a painting is usually a basic rectangular canvas. Then for hair when i paint/draw i have my hair tied up and in a bun so to me it would make sense doing the same for the artist vibe im going for.



BODY PAINTING

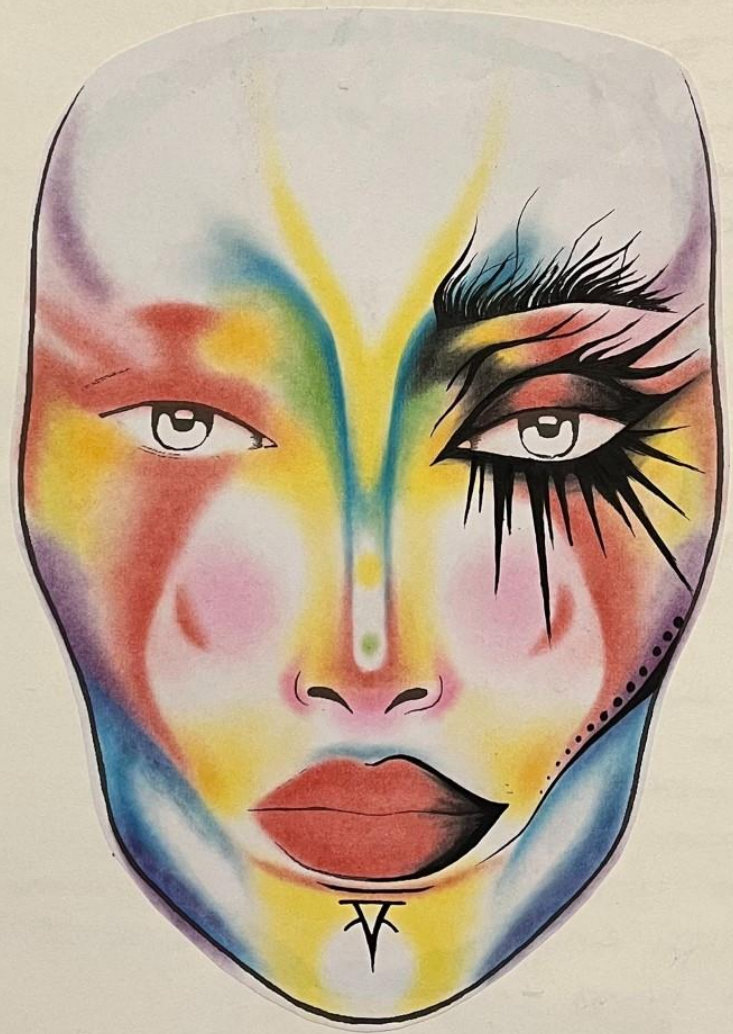
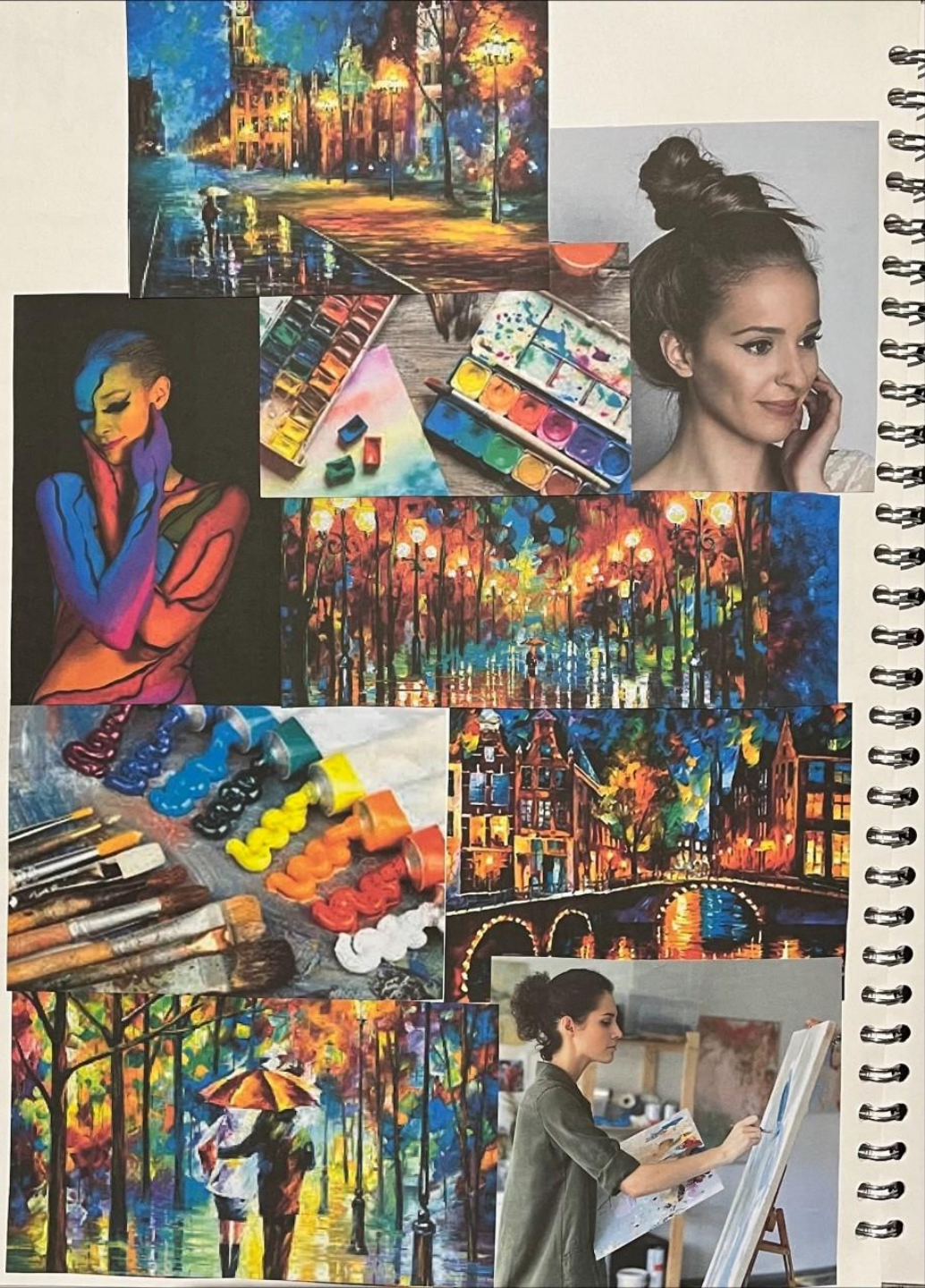
Body painting is probably one of the most ancient forms of art. It has been around for thousands of years and has been a critical part of human culture.

The art of painting our own bodies has been used to celebrate, go to war, hunt, seduce and more. Body painting is an incredible versatile art form that ranges from using decorative body paints to create designs on our bodies, to use modern body art form like tattoos.

Body painting can be dated back to the paleolithic when indigenous tribes use natural pigments made from ashes, rocks animal products and plants to decorate their bodies for diverse purpose.

Body painting was used on ceremonies with specific patterns and colours for each occasion, as well as on warriors to help their enemies identify themselves. It has also been used for camouflage.





BODY PAINT ARTISTS

SAMANTHA HELEN:

Samantha Helen is an industry body art specialist with a vision to inspire the creative community.

Working among leading professionals and brands such as Rankin, Coca-Cola, Superdrug and more, Samantha drives exciting creations into their campaigns.

An eye for the weird and wonderful, Samantha is known for pushing her looks with techniques acquired through her vast experience in industry.

Her vision was to create a brand where artists receive staple products needed to feed their creativity, having the essential brushes that every creative artist needs to fulfil any look. She started her brand Essentials in 2016 - 2017 and is going strong selling her brushes, paints and pigments.



LEONID AFREMOV

Leonid Afremov was born 12th July 1955 in Vitebsk, Belarus - but died 19th August 2019.

He was a Mexican-Israeli modern impressionistic artist who used to work mainly with a palette knife and vibrant oils. Afremov has developed his own unique technique and style which is unmistakable and cannot be confused with other artists. He was mainly known as being a self-representing artist who used to promote and sell his work exclusively over the internet with little exhibitions and involvement of dealers and galleries. His art work now sells for 168 dollars as the lowest price and ranges higher depending on each painting.

Leonid Afremov used to paint mainly landscapes, city scenes, seascapes, flowers and portraits. Most of his work is considered very colorful and politically neutral.

Before the advancement of online sales and ebay, Afremov was struggling artist. He was born in Vitebsk, Belarus, and lived there until 1990. Between 1990 and 2002 he lived in Israel and from 2002 to 2010 in Boca Raton, Florida. In 2010 Leonid moved to the popular resort town of Playa Del Carmen, Mexico for retirement and teaching to inspire young artists who later will become known as Afremov Studios.



METHOD: To do this look I started by applying a white base and setting with a translucent setting powder so it wouldn't move when I added eyeshadow on top. So after the white base I then went in with colour starting with the lightest so yellow and then slowly blended to the darkest purple. When added the colour I packed it on to begin with to get the best pigment. Then once I did this I blended some of the edges to create a smooth transition between either other colours or the white base. Once all the colour was on I then added the black detailing around the eye brow first then moving onto the eye and finally the cheek. I made the lines all different shapes to add dimension and I think it worked well. Finally I added black eyeshadow to blend harsh lines where I wanted a smoother transition.

REFLECTION: Overall I liked how this practice went I feel like when I add more black details it will be just what I wanted I love how vibrant the colours are and think with the black and white contrast it makes the colours pop even more. Next time I will try make the lines straighter and more refined to make it seem more complete and a final overall image.



PRACTICE

FINAL LOOK 3: MODEL

Jessica Gascoigne

METHOD: To start this look I began with a white grease paint to create an opaque base and placed only on the face. Then I set with a white setting powder to keep the coverage. Once the base was done I started going in with colour straight away. Like my practice I started with the lightest colour first so the yellow, then went in with the red on the places needed. Next I blended them two together with an orange to make a gradient if needed on the area. Next up was the blue I packed the colour on to get it pigmented as possible then I blended out with green on the nose to blend into the yellow. However, I used a purple on the cheeks to blend the blue into the red. To finish the colour I added pink to blend out some of the harsh red edges. Now it's time for the black I started with the eyebrows so I could get symmetry on both sides. I used a skinny liner brush so I could get sharp lines. I worked my way down and flicked the brush at the end to get a fine point. Once all the line work was done I finished with black eyeshadow to blend under the eyes and the lip to get the corners blended.



WHAT WENT WELL: I like how the look came out I love how the colours all pop off one another and think the white base with the black lines contrast really well. I also think packing each colour on was a good idea so I could get the best pigment possible. For this look my model cancelled on me however, I still managed to find another model on the day suitable for the look.

HOW TO IMPROVE NEXT TIME: Although I liked how it came out next time I would definitely take it down the neck and shoulders because I feel like it doesn't look complete, even though I did want it to look like a mask. I think the messy bun was a good hair choice however, I wish it was higher up to be more prominent. Lastly with the eyes I wish I put a black liner in the waterline so it didn't look like it just stopped, and I will also get reliable models.



PRODUCTS USED:

- white grease paint
- white setting powder
- rainbow eyeshadow
- black face paint
- black eyeliner

REFLECTIONS