



INSPIRATION

## SCULPT GEL: BITE MARK

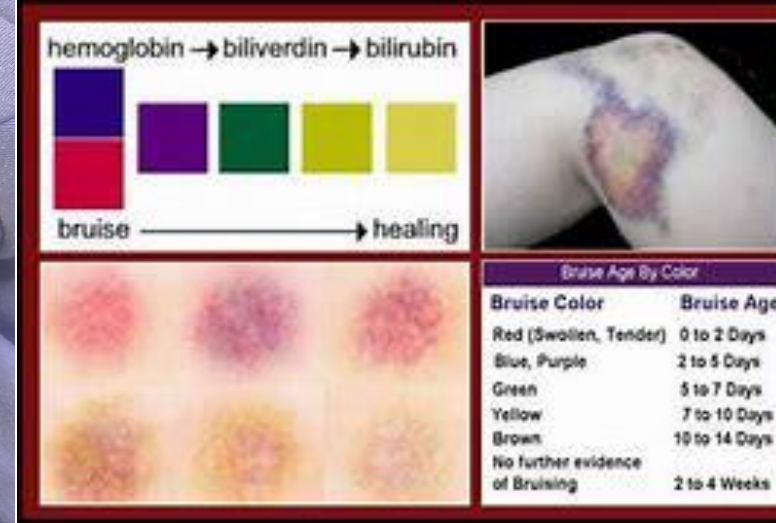
For a first attempt at a bite mark its not too bad however, next time I would leave more of a gap in the centre to make it seem like its been torn away and also add more definition with colour, add more depth with deeper and lighter shades of illustrator. This would make it appear more realistic.



INSPIRATION

### SCAR WAX: CUT/ SLASH

Personally I don't like using scar wax I think its difficult to work with as it can become quite sticky and is irritating to work with. Therefore, I am not happy with how this turned out so I will need to practice with scar wax more, I think its unrealistic and too bulky to be seen as realistic.



INSPIRATION

### BRUISES: ILLUSTRATOR

I think these bruises are decent but could be better so I will work on perfecting them. however, I don't think there too bad for a fist time doing bruises in a while as they do match the colours of the age there meant to portray.



INSPIRATION

### BRUISE: ILLUSTRATOR

My second attempt I am a lot happier with I think it came out a lot more realistic than the previous bruises I did, this is probably because I had an actual inspiration picture unlike before. I like the burst vessel look that I created as I feel like it added more depth and "realism"