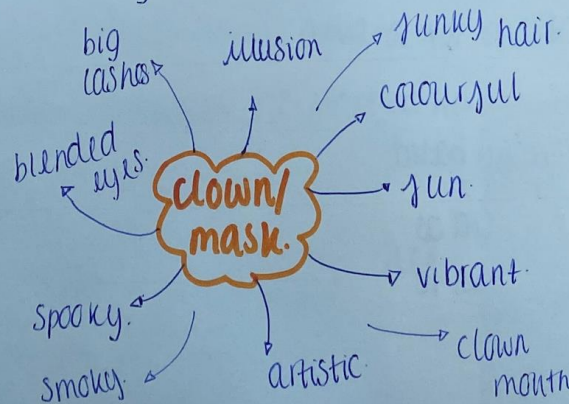


PROJECT 3 : CLOWN MASK.

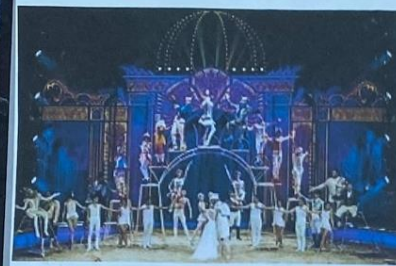
For my final look for project one, I'll be creating a clown inspired mask makeup look. For this look I'll be taking inspiration from ~~the~~ carnival / theatre masks and different clown themed films and how they was achieved. I've also taken inspo from the colourful stereotype clowns usually have. For this look I'll be planning hair and hopefully body art in some way.



@nikkitutorials



CIRCUS RESEARCH:



Researching carnival / circus's helps to give a better idea on how to design my look. Circus Krone is one of the largest circuses in Europe and one of the few to occupy a building.



It has been active from 1905 and has a total of 5k seats. This circus features in Munich, Germany and is spread out across 3 buildings.



Cirque Medrano is a French travelling circus originally located on the corner of rue des Martyrs. This circus in particular was famous during



the ~~best~~ world war I and started off by hiring 2 clowns and it took off from there.

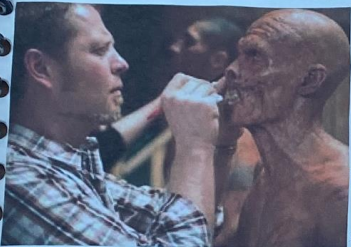
Circus Vagras is an American based circus in California, it is billed as one of the worlds biggest circus to still use a big top tent.



TV/film research:

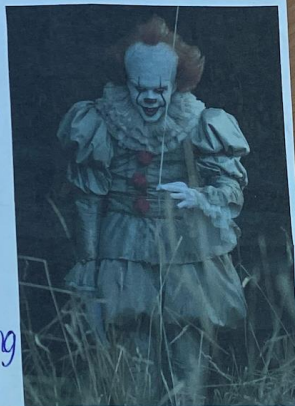


Clown effects are used in many areas of the industry including TV, fantasy and film. Most films use prosthetics and SFX to create clowns. Christian



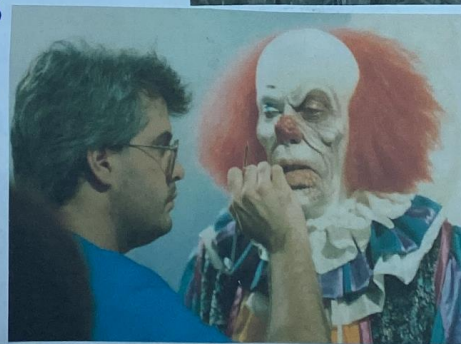
Tinsley is an Emmy awarded makeup artist who has famously created the clown from AHS, the tattoo work for prison break and the viral skull makeup from AHS.

The makeup artist who originally applied the first Pennywise is Bart Nixon, makeup artist for Iron Man, Captain America, Guardians of the Galaxy and Avengers.



He received an Emmy award for outstanding prosthetic makeup. He started his

career at 20 years old after working on a stand for a face paint company.



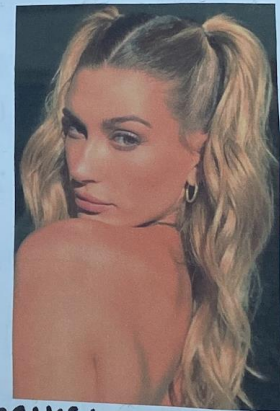
PIANING PROCESS

For my final look I'll be creating a mask outline and focus on creating colour and effect within the face. I'll be taking inspo from circus clowns as well as a previous clown look I did. From that, I'm going to use some of the skills from that look,



Previous look:

into this one including pale/white base, the clown mouth and colourful blended eye makeup. For my model's hair, I'll be creating two pigtails with a gelled back vibe in order to stick some pearls on top.



History behind theatrical masks:

The history behind the comedy and tragedy masks of theatre is these masks were used in early days to show how the actor was feeling, this is from ancient Greece. It was also said that it was so the audience in the back could clearly see the actors' emotion. The 2 mask symbol has been famous ever since then.

PRACTISE RUN.

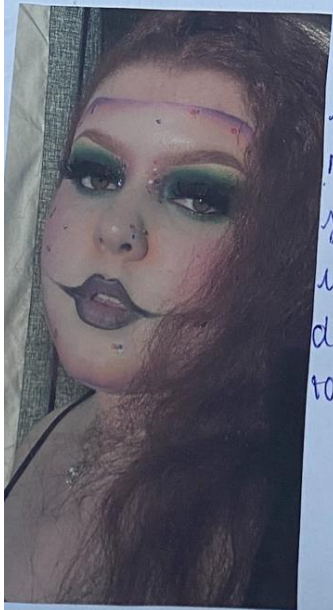


For my practise run of my look, I mainly practised my timing excluding the hair style, which took 1 hour and 20 minutes. I'm all in all proud of my first attempt, specifically the blending techniques of the eyes and face.

From practising, I learned that white foundation mixed with white cream face paint is the best way to achieve a flawless

white base. I also learnt that I preferred the pink on the lips to be a hotter pink

rather than the pink used. A final thing I'll add onto my look for the final assessment will be to include more colourful dots onto the face to tie into everything together.



FACE CHART:



brushed up brows using soap.

purple to pink blend on the outside of mask.

dark green winged out eyeshadow.

fluffy lashes on top and bottom.

orange yellow blend around nostrils.

black, white, red + blue dots using face paint.

clown lip - black blended into peachy colour.

Beetlejuice inspiration:

For the green and purple colour combo, I've taken inspo from the film Beetlejuice. Makeup artist Ve Neill, who produced the famous green and purple beetlejuice makeup, has been awarded and nominated for 8 Oscars in total. I've also taken inspiration from the colours of the original Joker, makeup artist, ~~with~~ Nicki Ledermann, who also produced the look. Nicki has earned her first Oscar nomination from her work on the Joker.



SELF REFLECT.



Reflecting on my final look, I'm overall really proud of how well it turned out. Following onto from my practise look, I decided to add more dots onto the inner corners and include some glitter too. I also decided to blend the purple borders down to make the look feel abit more completed. In future ill dyinetly consider outfit/ costume for the final makeup.

Hair products:

Budget list:

- eye primer - £8.
- muamasma skin base - £33.
(white).
- face paint palette - £10.
- lashes - £7.
- glitter - £4.

- Hair gel - 99p
- hairspray - 99p.
- straighteners.

Total = £153.98



- eyeshadow palette - £20.
- cream blush - £13.
- black gel liner - £9.
- brow soap - £7.
- plowise base - £13.
- muamasma setting powder - £28.

